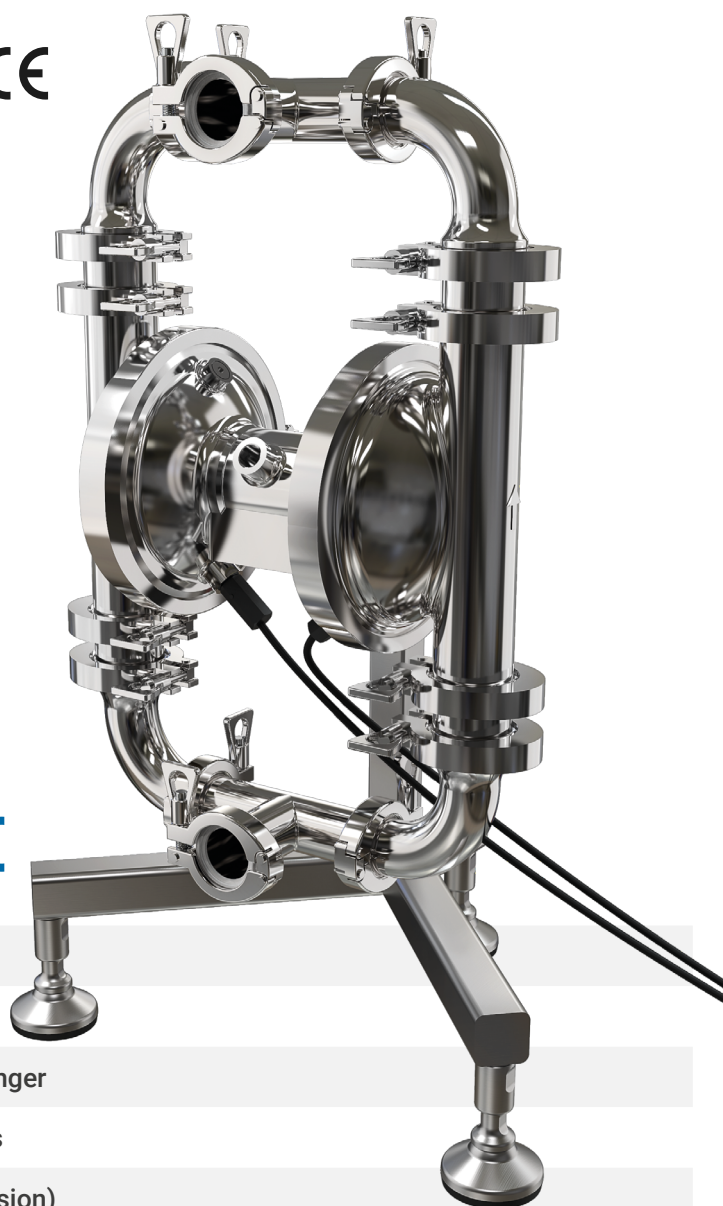


SANIBOXER - 02

Suction/delivery connections	BS 4825 1"1/2 Clamp
Air fitting	3/8" f BSPP
Max flow rate*	160 l/min
Max air supply pressure	8 bar
Max head*	80 m
Max suction from negative head - dry running*	2,5 m
Max suction from negative head - with pump on	9,5 m
Max diameter of suspended solids	7 mm

* The value depends on the pump configuration.

CE



Certifications:



Special Diaphragms with ANTI-DEPOSIT surface

Mould cast main block consists on a single piece

Patented stall-prevention coaxial pneumatic exchanger

Stainless steel stand for quick emptying operations

Anti-vibration feet (3A-certified for SANIBOXER version)

Eccentric valves (in AISIBOXER – SANIBOXER-03 pumps)

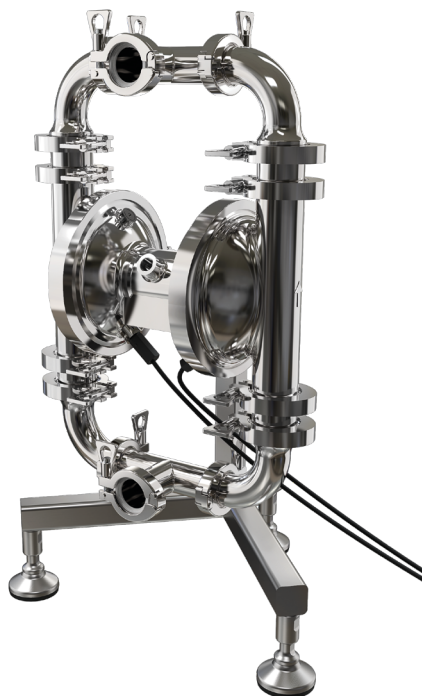
Rotating connections

Sensors to detect diaphragm rupture (standard in SANIBOXER version)

Compatible with CIP, COP and SIP methods

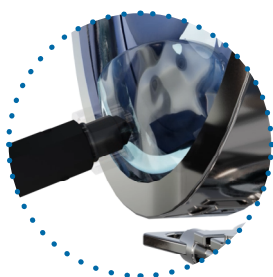
SANIBOXER - 02

Specifications and types



Optical sensors to detect diaphragm rupture

In case of rupture, the sensors warn the operator and automatically stop pump operation via a solenoid valve.



Certifications:



AISI 316 L

SANIBOXER-02



Maximum Dimensions

Height	714 mm
Width	436 mm
Depth	370 mm

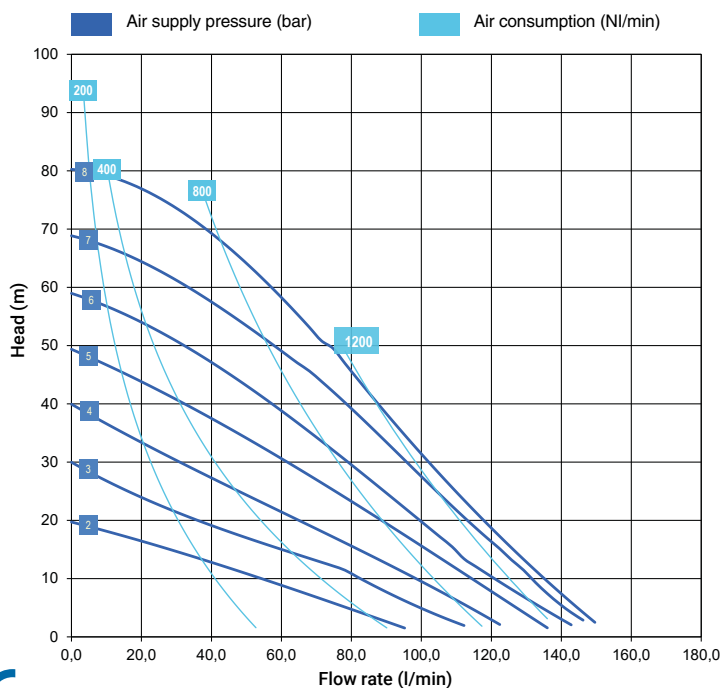


Const. mat. (casing and manifolds) and net weight

AISI 316 L**	22 Kg
	Temp. 3°C min.
	95°C max*

* Warning on process temperatures: for washing and sanitisation, the pumps can be subjected to CIP, COP and SIP with temperatures up to 130 C.

** Mechanically polished - surface finish <0.8 µm



* The curves and performances refer to pumps with submerged suction and free delivery outlet, with water at 20°C and vary according to the composition materials.

