

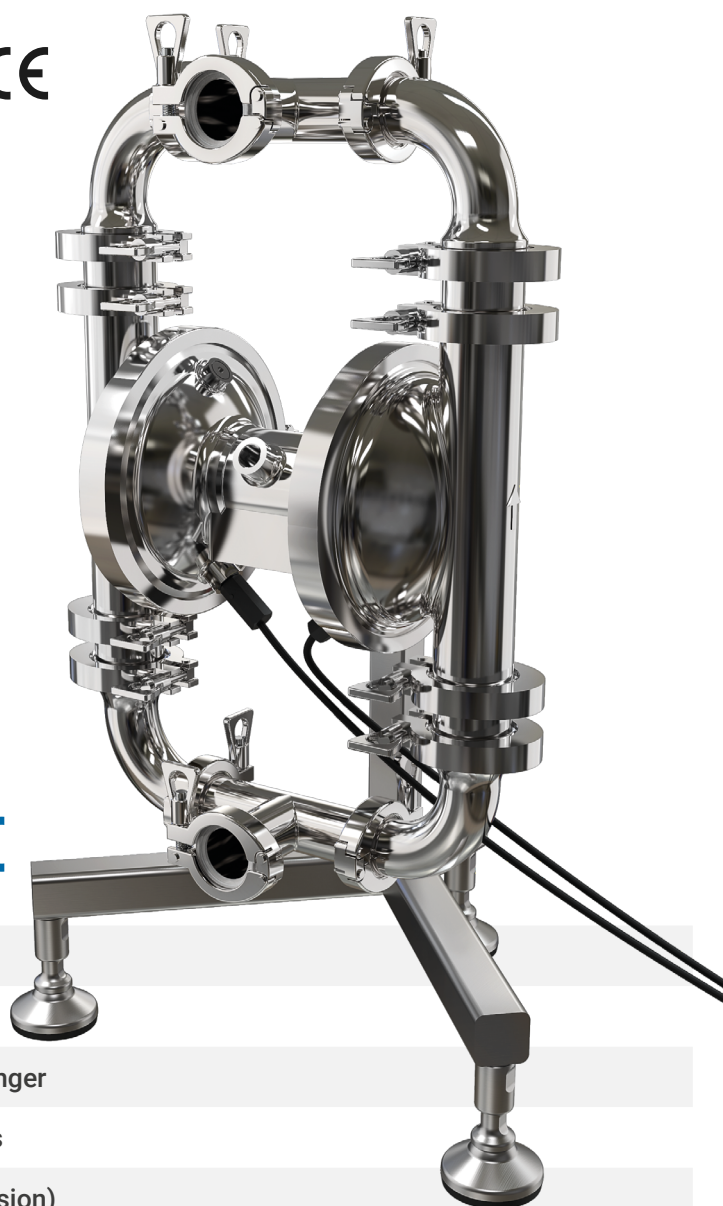
SANIBOXER - 02

1" PUMP

Suction/delivery connections	BS 4825 1"1/2 Clamp
Air fitting	3/8" f BSPP
Max flow rate*	160 l/min
Max air supply pressure	8 bar
Max head*	80 m
Max suction from negative head - dry running*	2,5 m
Max suction from negative head - with pump on	9,5 m
Max diameter of suspended solids	7 mm

* The value depends on the pump configuration.

CE



Certifications:



Special Diaphragms with ANTI-DEPOSIT surface

Mould cast main block consists on a single piece

Patented stall-prevention coaxial pneumatic exchanger

Stainless steel stand for quick emptying operations

Anti-vibration feet (3A-certified for SANIBOXER version)

Eccentric valves (in AISIBOXER – SANIBOXER-03 pumps)

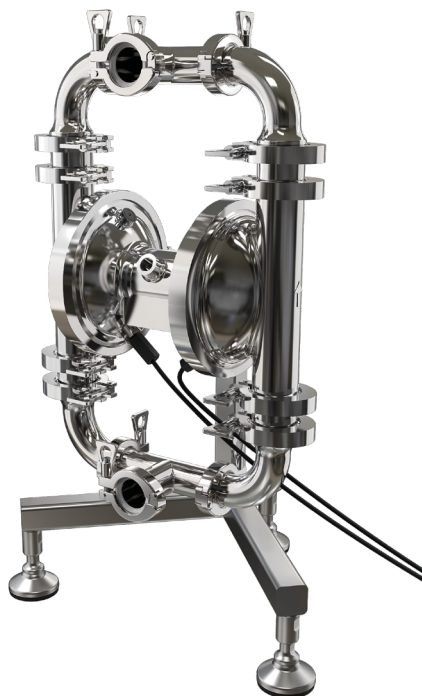
Rotating connections

Sensors to detect diaphragm rupture (standard in SANIBOXER version)

Compatible with CIP, COP and SIP methods

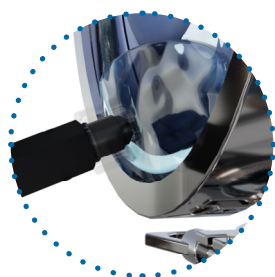
Specifications and types

1" PUMP



Optical sensors to detect diaphragm rupture

In case of rupture, the sensors warn the operator and automatically stop pump operation via a solenoid valve.



AISI 316 L

SANIBOXER-02



Maximum Dimensions

Height	714 mm
Width	436 mm
Depth	370 mm

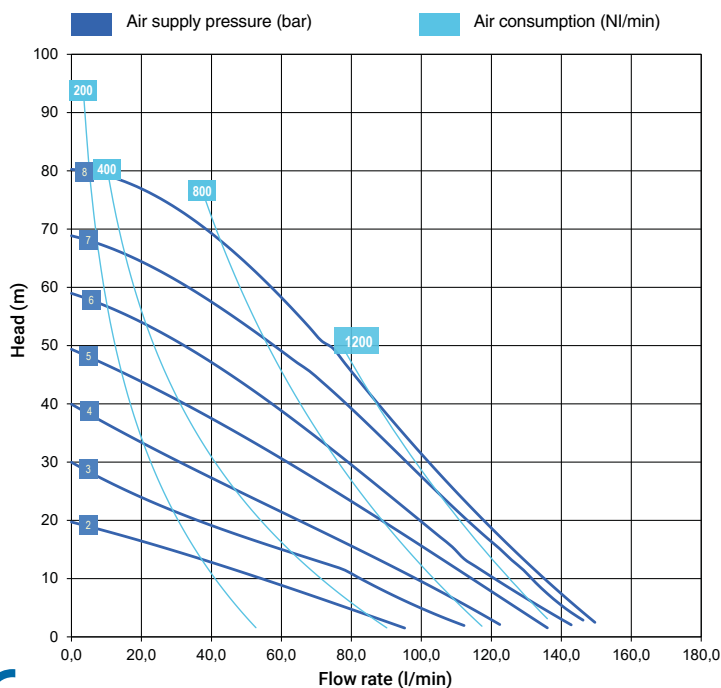


Const. mat. (casing and manifolds) and net weight

AISI 316 L**	22 Kg
	Temp. 3°C min. 95°C max*

* Warning on process temperatures: for washing and sanitisation, the pumps can be subjected to CIP, COP and SIP with temperatures up to 130 C.

** Mechanically polished - surface finish <0.8 µm



* The curves and performances refer to pumps with submerged suction and free delivery outlet, with water at 20°C and vary according to the composition materials.

Certifications:

